

# Bulldog<sup>®</sup> recycling rotating nozzles

The **enz golden jet<sup>®</sup>** Bulldog Rotating Nozzle has been designed for operation with recycling water and fresh water. The cleverly built sliding bearing allows the use of every kind of recycled water. An integrated oil-free braking system results in a low wear and tear operation and in controlled numbers of rotation. In this way a most efficient and economic pipe cleaning is achieved. The bore of the nozzle insert determines the admissible size of the dirt particles up to a maximum  $\varnothing$  0.04 inch.

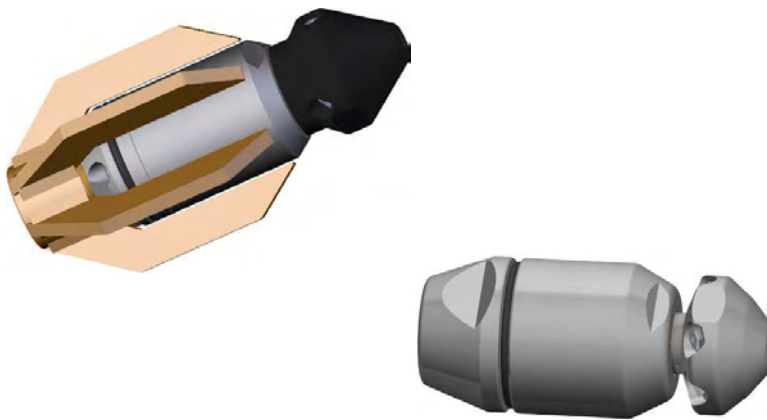
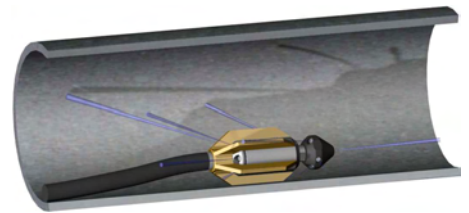
Transport and water costs are noticeably reduced.

## Characteristics

- Easy to handle
- The tool is virtually maintenance-free

## Applications

- For operation with recycling water and fresh water



# Bulldog® recycling rotating nozzles

## Bulldog® rotating nozzle 3/8" - 1 1/4"



|  | <b>400.037</b> | <b>400.037C</b> | <b>400.037S</b> | <b>00100.03720</b> | <b>00100.03720C</b> |
|--|----------------|-----------------|-----------------|--------------------|---------------------|
|  | 1/2            | 3/4             | 1/2             | 1/2                | 3/4                 |
|  | 2 - 8          |                 |                 | 3 - 8              |                     |
|  | 10.5           |                 |                 |                    |                     |
|  | 6 × M6         |                 |                 |                    |                     |
|  | —              |                 | 6 × M6          |                    |                     |
|  | 1 × M6         |                 |                 |                    |                     |
|  | 1.5 × 3.3      | 1.5 × 3.5       | 1.5 × 3.3       | 2.4 × 4.3          |                     |
|  | 0.89           | 0.93            | 0.91            | 0.56               |                     |
|  | 2,900          |                 |                 |                    |                     |
|  | x              | x               | x               | x                  | x                   |



|  | <b>400.060A</b> | <b>400.060BS</b> | <b>402.080LS100 /<br/>404.080HS100</b> | <b>402.080LS150 /<br/>404.080HS150</b> | <b>400.080SET100 /<br/>400.080SET150</b> |
|--|-----------------|------------------|--|--|--|
|  | 3/4             | 1                | 1                                      | 1                                      |  |
|  | 4 - 12          |                  | 5 - 16                                 | 7 - 16                                 |  |
|  | 26              |                  | 53                                     | 53                                     |  |
|  | 6 × M8          |                  | 6 × M10                                | 6 × M10                                |  |
|  | 6 × M8          |                  | (6 × M8)*                              | (6 × M8)*                              |  |
|  | 1 × M8          |                  | 1 × M10                                | 1 × M10                                |  |
|  | 2.4 × 6         |                  | 3.9 × 8.7                              | 5.9 × 10.2                             |  |
|  | 4.60            |                  | 8.22                                   | 12.82                                  |  |
|  | 2,900           |                  |  |  |  |
|  | x               | x                | x                                      | x                                      |  |

LS = slow turning

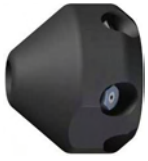
HS = fast turning

\* Thrust can be closed with the thrust stop piece

High Performance Tool **enz golden jet®**

|  |                          |  |                  |   |                        |
|--|--------------------------|--|------------------|---|------------------------|
|  | Connecting thread [inch] |  | Rotating nozzles |   | Maximum pressure [psi] |
|  | Application range [inch] |  | Thrust jet       |   | Recycling              |
|  | min. gpm at 1450 psi     |  | Front jet        | * | Option                 |
|  | Measures [inch]          |  | Weight [lb.]     |   |                        |

# Bulldog® recycling rotating nozzles



## LS\*Head HRH slow turning

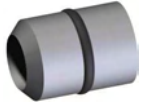
00402.0805-4

ØxL 2.6 × 2.2

1.50

Inserts not included

6x M10

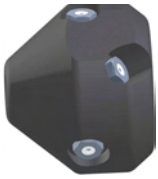


## \*Thrust stop

00100.08073

OR 18.0200

O-Ring



## HS\*Head KBR fast turning

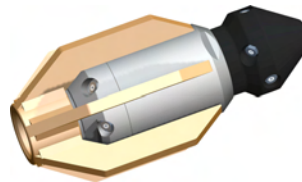
00404.0805-12

ØxL 2.6 × 2.2

1.54

Inserts not included

6x M10



|     | 400.101A                         | 400.101B | 600.100A           | 600.100B |
|-----|----------------------------------|----------|--------------------|----------|
|     | 1                                | 1 1/4    | 1                  | 1 1/4    |
|     | 8 - 24                           |          | 6 - 23.5           |          |
|     | 53                               |          | 52.5               |          |
|     | 3 × M10<br>2 × M10 (from 80 GPM) |          | 3 × M10<br>3 × M10 |          |
|     | 6 × M10                          |          | 6 × M10            |          |
|     | 1 × M10                          |          |                    |          |
| ØxL | 5 × 10                           |          | 4.5 × 10           |          |
|     | 16.00                            |          | 17.00              |          |
|     | 2,900                            |          | 2,900              |          |
|     | x                                |          | x                  |          |

|     |                          |  |                  |   |                        |
|-----|--------------------------|--|------------------|---|------------------------|
|     | Connecting thread [inch] |  | Rotating nozzles |   | Maximum pressure [psi] |
|     | Application range [inch] |  | Thrust jet       |   | Recycling              |
|     | min. gpm at 1450 psi     |  | Front jet        | * | Option                 |
| ØxL | Measures [inch]          |  | Weight [lb.]     |   |                        |

High Performance Tool **enz golden jet®**