

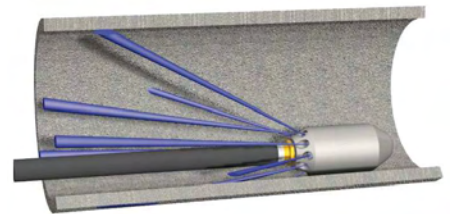
# Grenade-bombs

This **enz golden jet<sup>®</sup>** jet nozzle is made of wear-resistant hardened steel. Two different jet angles of 10° and 30° perform together providing strong traction and effective cleaning. The high efficiency is reached by appropriate water guidance.

For optimal around cleaning, the nozzles 40.075 to 42.125A can be equipped with fan-jet ceramic inserts.

## Applications

- Removal of stone, gravel and soft deposits
- Cleaning pipes before the use of chain flail head or cutter



# Grenade-bombs

## Grenade-bombs 1/4"



	40.025N-10	40.025N-30	40.025N-40
	1/4 NPT		
	1.2 - 4		
	2.5	8	10.5
	4 × 0.8	4 × 1.3	4 × 1.45
	1 × M4		
	20°		
	1.0 × 1.6		
	0.21		
	5,075		
	—	—	—

## Grenade-bombs 3/8" - 3/4"



	40.038N	40.050	42.050	40.075	40.075-SP30	42.075
	3/8 NPT	1/2		3/4		
	1.8 - 4	2.5 - 6		3 - 8		
	2.6	13		26		39.5
	6 × M6	6 × M8	3 × M8	4 × M8		4 × M8
			3 × FanJet M8	4 × M8		4 × FanJet M8
	1 × M6	1 × M8				
	25°			10° + 30°	30°	
	1.5 × 3.15	1.9 × 3.5		2.3 × 4.6		
	1.15	1.90		3.40	3.00	
	5,075					
	X	X		X		

The item 42.050 and 42.075 is only available with fan-jet inserts Ø 1.0 mm and Ø 1.5 mm.

High Performance Tool

	Connecting thread [inch]		Thrust jet		Maximum pressure [psi]
	Application range [inch]		Front jet		Recycling
	min. gpm at 1450 psi		Jet angle backward		
	Measures [inch]		Weight [lb.]		

# Grenade-bombs

## Grenade-bombs 1"



	40.100A	40.100A-SP10	40.100A-SP15	40.100A-SP30	42.100A
	1				
	6 - 12				
	40				
	10 × M10				5 × M10 5 × FanJet M10
	—				
	10° + 30°	13°	15°	30°	10° + 30°
	3.1 × 6.9				
	10.90				
	3,625				
	x				



	40.100B	40.100B-SP10	40.100B-SP30	42.100B
	1			
	6 - 16			
	40			
	10 × M10			5 × M10 5 × FanJet M10
	—			
	10° + 30°	10°	30°	10° + 30°
	4 × 8			
	17.78			
	3,625			
	x			

	Connecting thread [inch]		Thrust jet		Maximum pressure [psi]
	Application range [inch]		Front jet		Recycling
	min. gpm at 1450 psi		Jet angle backward		
	Measures [inch]		Weight [lb.]		

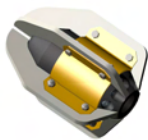
# Grenade-bombs

## Grenade-bombs 1 1/4"



	40.100C	40.100C-SP10	40.100C-SP20	42.100C	40.125A	40.125-SP10	42.125A
	1 1/4						
	6 - 16				12 - 24		
	53				79		
	10 × M10			5 × M10 5 × FanJet M10	10 × M10		5 × M10 5 × FanJet M10
	—				—	—	
	10° + 30°	10°	20°	10° + 30°	10° + 30°	10°	
	3.9 × 7.5				4.2 × 8.7		
	17.77				23.33		
	3,625						
	X				X	X	

## Accessory and wearing parts



### Cage with skids for clay pipes + Inliner

<b>40.1004A</b>	for Grenade-bomb 40.100A	Ø 7 - 12
<b>40.1004B</b>	for Grenade-bomb 40.100B	Ø 8 - 16

	Connecting thread [inch]		Thrust jet		Maximum pressure [psi]
	Application range [inch]		Front jet		Recycling
	min. gpm at 1450 psi		Jet angle backward		
	Measures [inch]		Weight [lb.]		